


The Advantis logo features the word "Advantis" in a black, sans-serif font. A red swoosh underline starts under the 'A', loops around the 'i', and ends under the 's'. The background of the top left section is a faded satellite map of a city.

PumpScout

Remotely monitor your pumps using satellite or cellular

A photograph showing a man in a dark jacket and jeans standing next to a white pickup truck. He is looking at a laptop on the truck's hood. In the background, there is a utility site with a cell tower and a satellite dish. The sky is blue with some clouds. The text "Pump Scout Remote Monitoring AND Control Equipment" is overlaid on the image in white and blue.

Pump Scout Remote Monitoring AND Control Equipment

The **PumpScout** family of monitoring equipment will monitor your lift stations or pumps using satellite or cellular communications. PumpScout will provide you with all the information regarding status, faults, power, level, and a real time look at the stations via Internet web applications, text messages, e-mails and voice.

Easily upgraded without changing equipment.

PumpScout Cub

Will provide you with alarms as they happen and a daily summary report of the pump activity. You can monitor two pumps, power and current. The detailed daily report will provide all the activity at the remote location listing run times and all alarms, with an acknowledgement feature for the person that responded to the action.

PumpScout Explorer

Has all the features of PumpScout Cub, plus the ability to receive real time reports on the status of the remote location using an Internet connection and web browser from your home or office.

PumpScout Eagle

Has all the features of PumpScout Explorer plus a very feature-rich collection of I/O to track flow, do simple **INI** studies, monitor digital inputs and monitor 4-20 mA inputs. Using digital and analog inputs/outputs, you can remotely control various functions at the station to turn pumps on and off, control valves, control adding chemicals to the station or other functions, plus real time access to the station to view status and activities. All accessed and controlled via Internet web connection.

LEASE OPTION

Advantis PumpScout lease options allow you to become operational immediately with a low monthly fee. This is a great solution for small municipalities!

60 DAY TRIAL AVAILABLE

Advantis will allow you to try PumpScout for 60 days. Call your local representative for details.

Out of the box and ready to monitor your pumps or lift stations within two hours. Everything for most installations is included, even the screws.

Advantis, LLC 2816 E Loop 390 N Marshall, TX 75672

Phone 1-888-916-5553

E-mail Sales@AdvantisUS.com www.AdvantisUS.com

b Mar 092010

Remotely monitor your pumps using satellite or cellular

Features



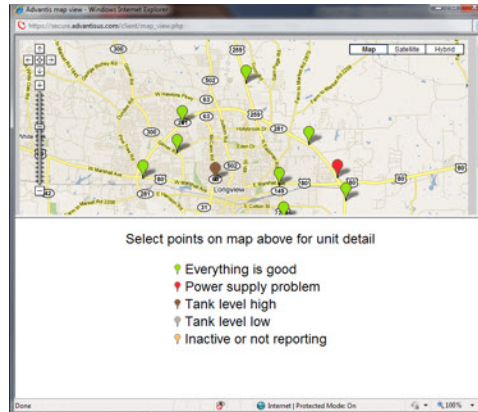
C
U
B

E
X
P
L
O
R
E
R

E
A
G
L
E

High/Low level alarm	✓	✓	✓
Pump runtime	✓	✓	✓
Breaker trip	✓	✓	✓
Motor starter / pump failure	✓	✓	✓
Monitor two pumps	✓	✓	✓
Average run amps	✓	✓	✓
Low line pressure	✓	✓	✓
Power loss	✓	✓	✓
Emergency power	✓	✓	✓
Excess motor starts/stops	✓	✓	✓
Communications status	✓	✓	✓
Alarm acknowledgement	✓	✓	✓
Battery checked under load	✓	✓	✓
Electronic Id site verification	✓	✓	✓
Reports	✓	✓	✓
Real time reports		✓	✓
Monitor three pumps			✓
Optional rain gauge		✓	✓
Additional digital I/O			✓
4-20 mA or voltage I/O			✓
Remote control I/O			✓
Field upgrade	✓	✓	✓
Alarms via Text	✓	✓	✓
Alarms via voice	✓	✓	✓
Alarms via e-mail	✓	✓	✓
Level sensor		✓	✓
Power loss high level alarm		*	*
OPC DataHub		*	*
Optional call for info		*	*

Map



Detail report

Date/Time	Status	run time / avg amps
05-04-2009 06:00	normal report	18:16 / 13
05-05-2009 06:00	normal report	13:19 / 13
05-06-2009 06:00	normal report	21:14 / 13
05-06-2009 18:58	tank level normal	
05-06-2009 19:00	normal report	
05-07-2009 06:00	normal report	19:07 / 13
05-07-2009 12:01	Motor 2 failed	
05-07-2009 12:03	normal report	
05-07-2009 12:03	tank level high	
05-07-2009 12:03	Motor 2 good	
05-07-2009 12:07	tank level normal	
05-08-2009 06:00	normal report	9:41 / 13

Installation Overview

The system is very simple and is intended to be installed by maintenance personnel or your local lift station electrician. The enclosure is mounted along with an antenna. Current sensors are mounted for each pump motor. None of the existing instrumentation is changed, thus keeping your lift station 'as is', yet automated, for daily reports and alarms.



SPECIFICATIONS

Physical

NEMA Type 4X UV Blended Plastic L-11.25 x W-7.5 x D-5.5
 Power Supply - 120 vac to 15vdc, 3.4 Amp
 Battery (backup) 1.4 Amp-hr
 Operating Temp: -13 – 158F
 Humidity: 5% to 95%, no condensing

Communications

Satellite

Cellular

Software

Web Application – included with monthly monitoring

I/O

Digital In - 10

5 - Reserved for Cub

5 - User configured for Eagle

2 - Pulse / Freq

2 - On / Off dry contact *

1 - 3rd Pump for Eagle

Analog In - 7

4-Reserved for Cub

1 - 4-20 mA or 0-12 volts for *Explorer

1 - 4-20 mA or 0-20 volts for *Eagle

1 - 3rd Pump for Eagle

Remote Control* - 5

5 - User configured for Eagle

1 – Sinking - Digital

2 – Sourcing - Digital

2 – PWM - Analog

NOTE: Other I/O available at customer request.

Blue is for Eagle options

Green is for Explorer

* Special considerations with satellite

Advantis, LLC 2816 E Loop 390 N Marshall, TX 75672

Phone 1-888-916-5553

E-mail Sales@AdvantisUS.com www.AdvantisUS.com